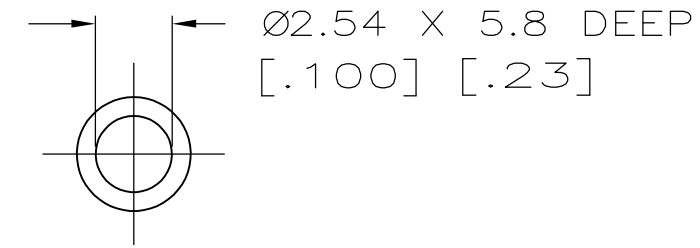
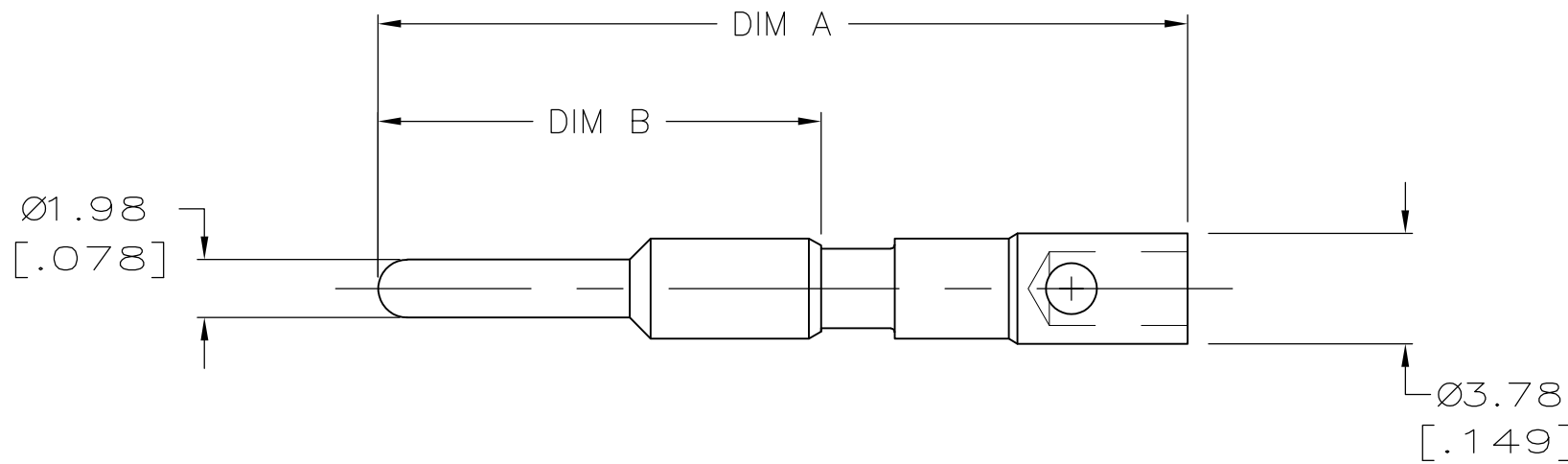


THIS DRAWING IS UNPUBLISHED. RELEASED FOR PUBLICATION  
 © COPYRIGHT BY TYCO ELECTRONICS CORPORATION. ALL RIGHTS RESERVED.

LOC	DIST	REVISIONS			
P	LTR	DESCRIPTION	DATE	DWN	APVD
FT	0	C2	REVISED PER ECO-07-029115	12/10/07	SS GS

- 1 MATERIAL:  
BODY: COPPER ALLOY
- 2 FINISH—BODY AND BAND, .0002 IN. SILVER.
- 3. WIRE BARREL WILL ACCEPT 12–14 AWG WIRE.
- 4. MATES WITH AMP PART NUMBER 193842–1.



.650	1.15	193841–2
.602	1.10	193841–1
DIM B	DIM A	PART NUMBER

THIS DRAWING IS A CONTROLLED DOCUMENT.		DWN CRAIG M. SVOBODA	03-18-94		Tyco Electronics Corporation Harrisburg, PA 17105-3608	
DIMENSIONS: mm [INCHES]		TOLERANCES UNLESS OTHERWISE SPECIFIED:		NAME PIN, 2mm, 12–14 AWG HIGH CURRENT MATE–N–LOK II		
		0 PLC ± -	1 PLC ± -	PRODUCT SPEC		
		2 PLC ± 0.5[.02]	3 PLC ± 0.25[.010]	APPLICATION SPEC		
		4 PLC ± -	ANGLES ± -	SIZE CAGE CODE DRAWING NO RESTRICTED TO		
MATERIAL - 1		FINISH - 2		A3 00779 C-193841		-
CUSTOMER DRAWING				SCALE 4:1	SHEET 1 OF 1	REV C2